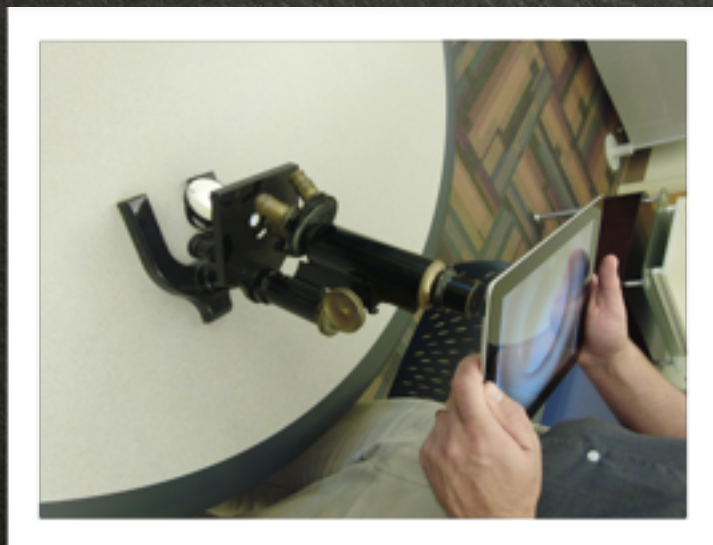




# MICROSCOPE NOTES

by MS TOAL

COPY ALL NOTES!!!!!!!!!!!!





# 1) HAND LENS (10X)

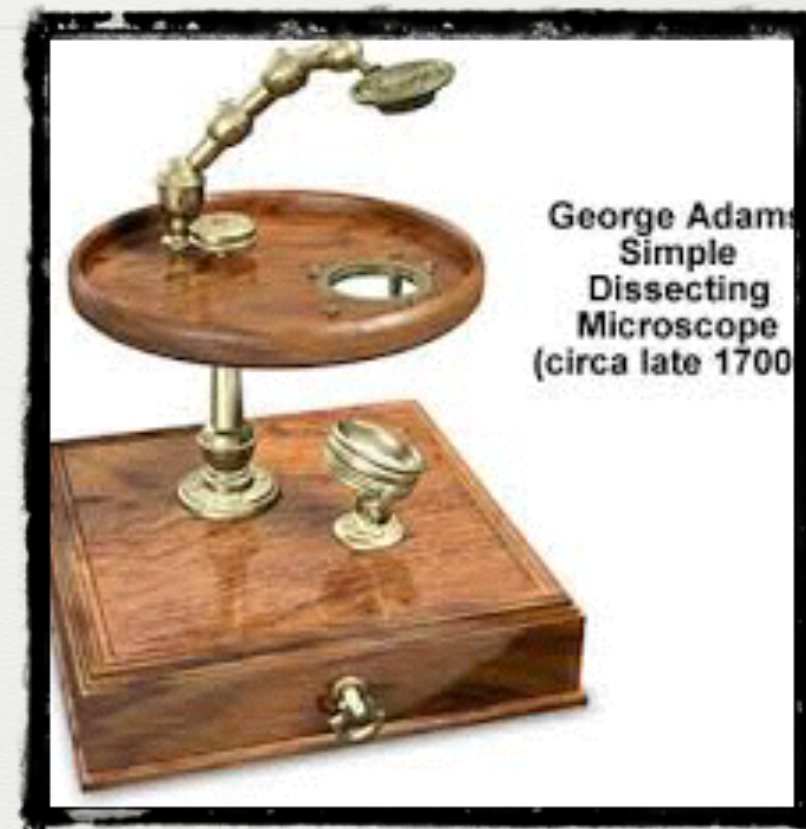
- LOOK AT NATURAL THINGS -
- ROCKS
- LEAVES
- INSECTS





## 2) SIMPLE DISSECTING MICROSCOPE (10X)

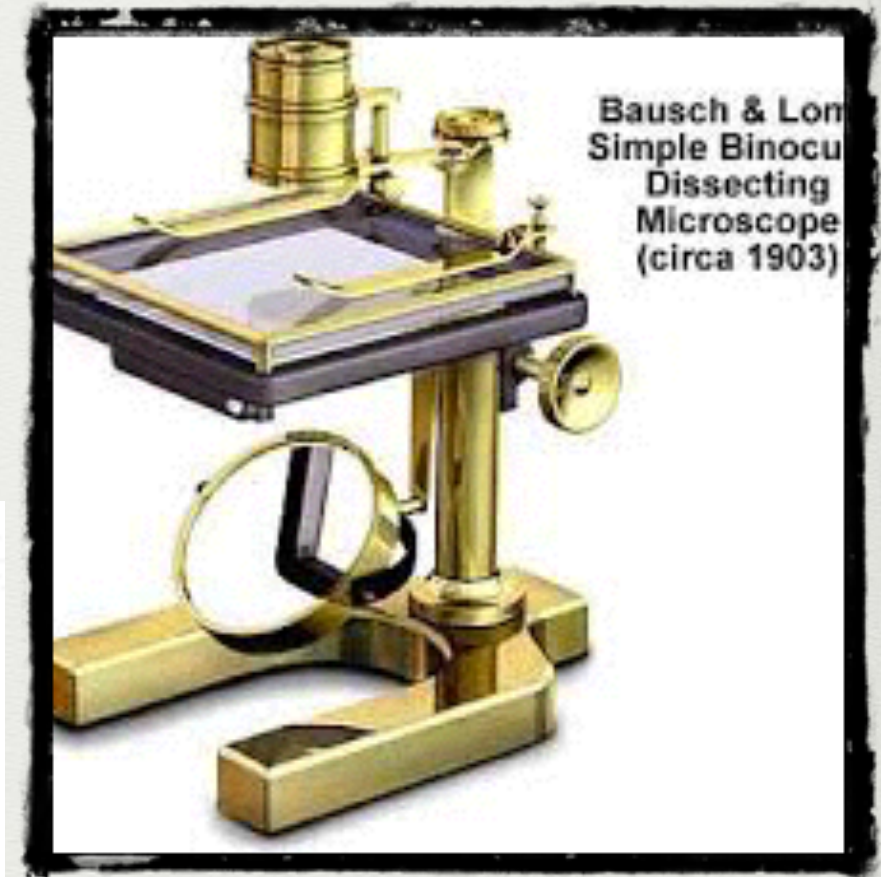
- DISSECT SMALL ANIMALS, PLANTS AND INSECTS





# 3) BINOCULAR DISSECTING MICROSCOPE (50X)

- BINOCULAR MEANS 2 EYEPIECES
- USED TO DO FINE DISSECTING





# 4) STUDENT COMPOUND MICROSCOPE (100X)

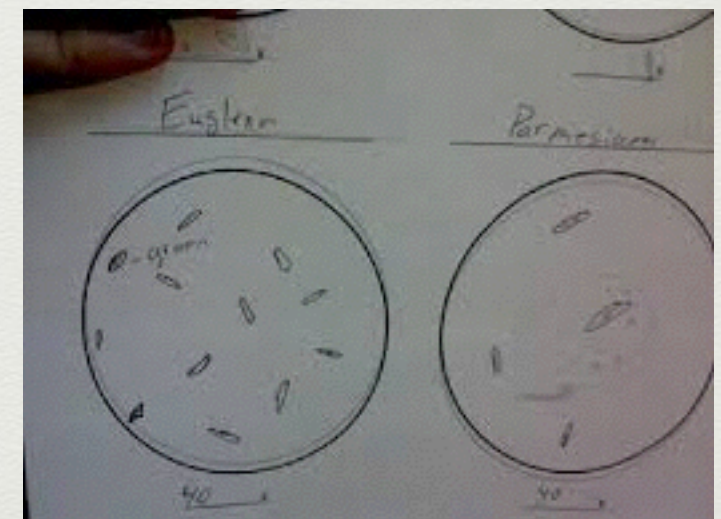
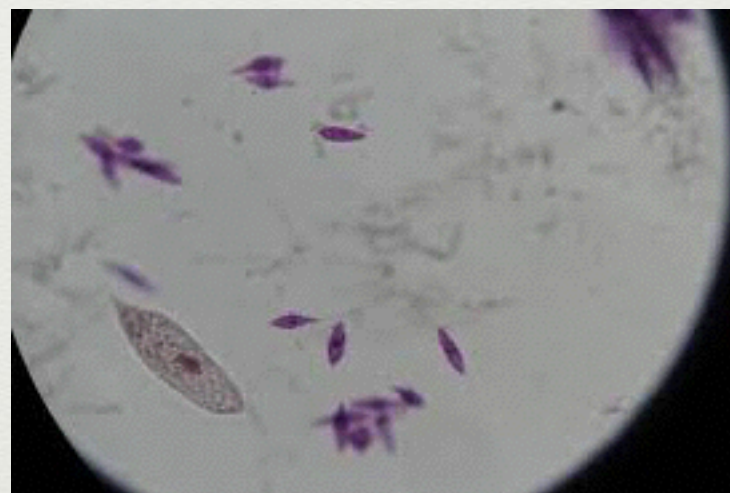
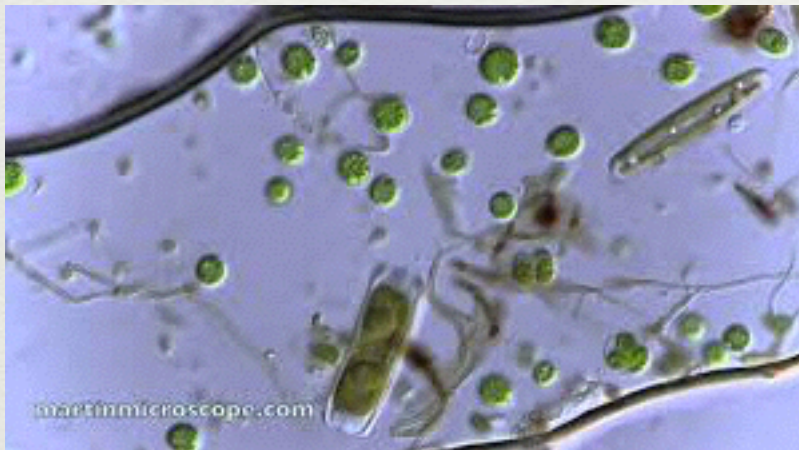
- COMPOUND MEANS AN EYEPIECE AND AN OBJECTIVE LENS
- LOOK AT SMALL OBJECTS AND POND WATER





# 5) STANDARD COMPOUND MICROSCOPE (40X, 100X, 400X)

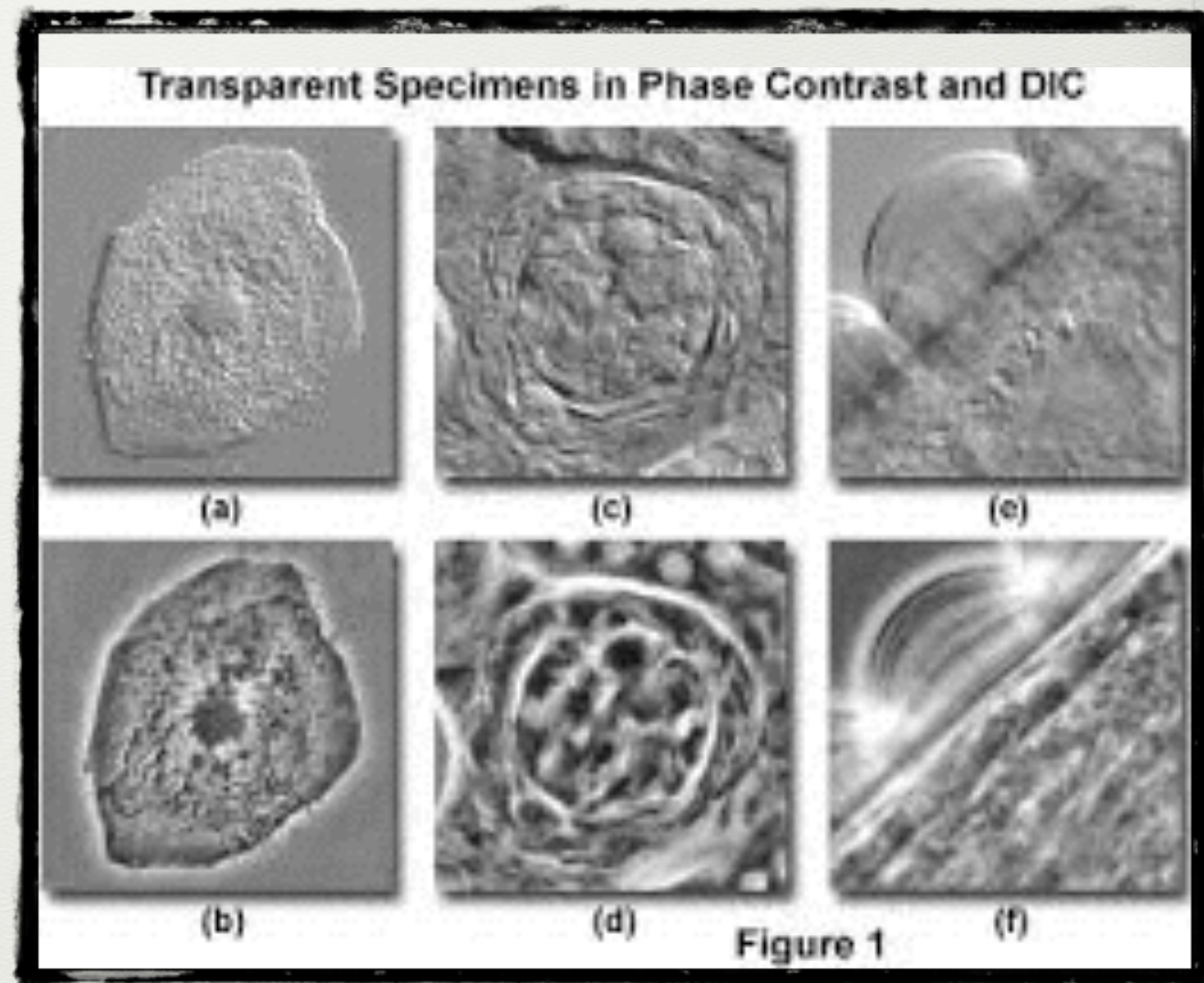
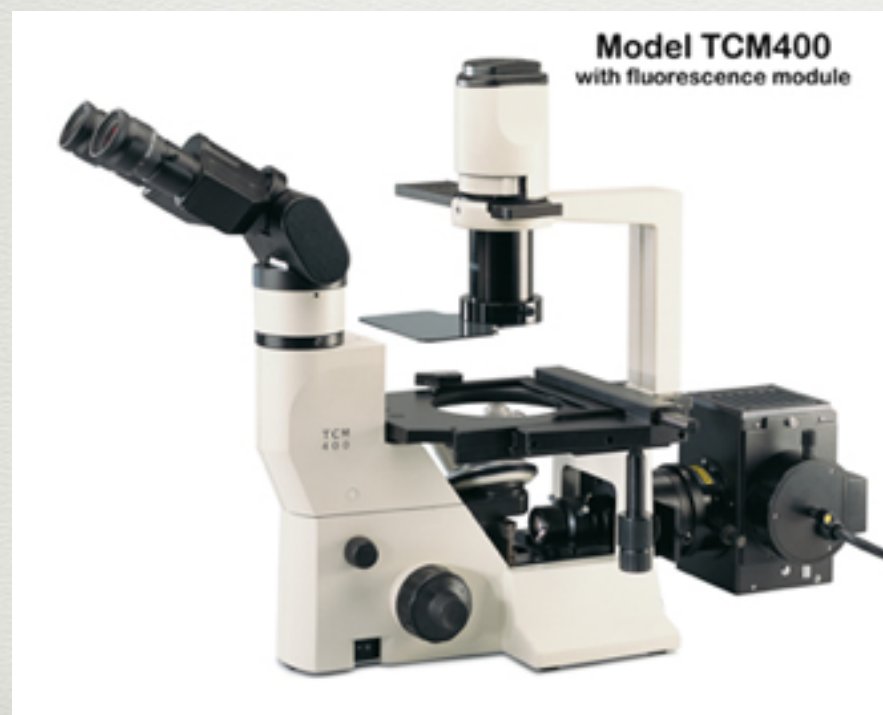
- LOOK AT SMALL OBJECTS AND POND WATER, BACTERIA





# 6) PHASE MICROSCOPES

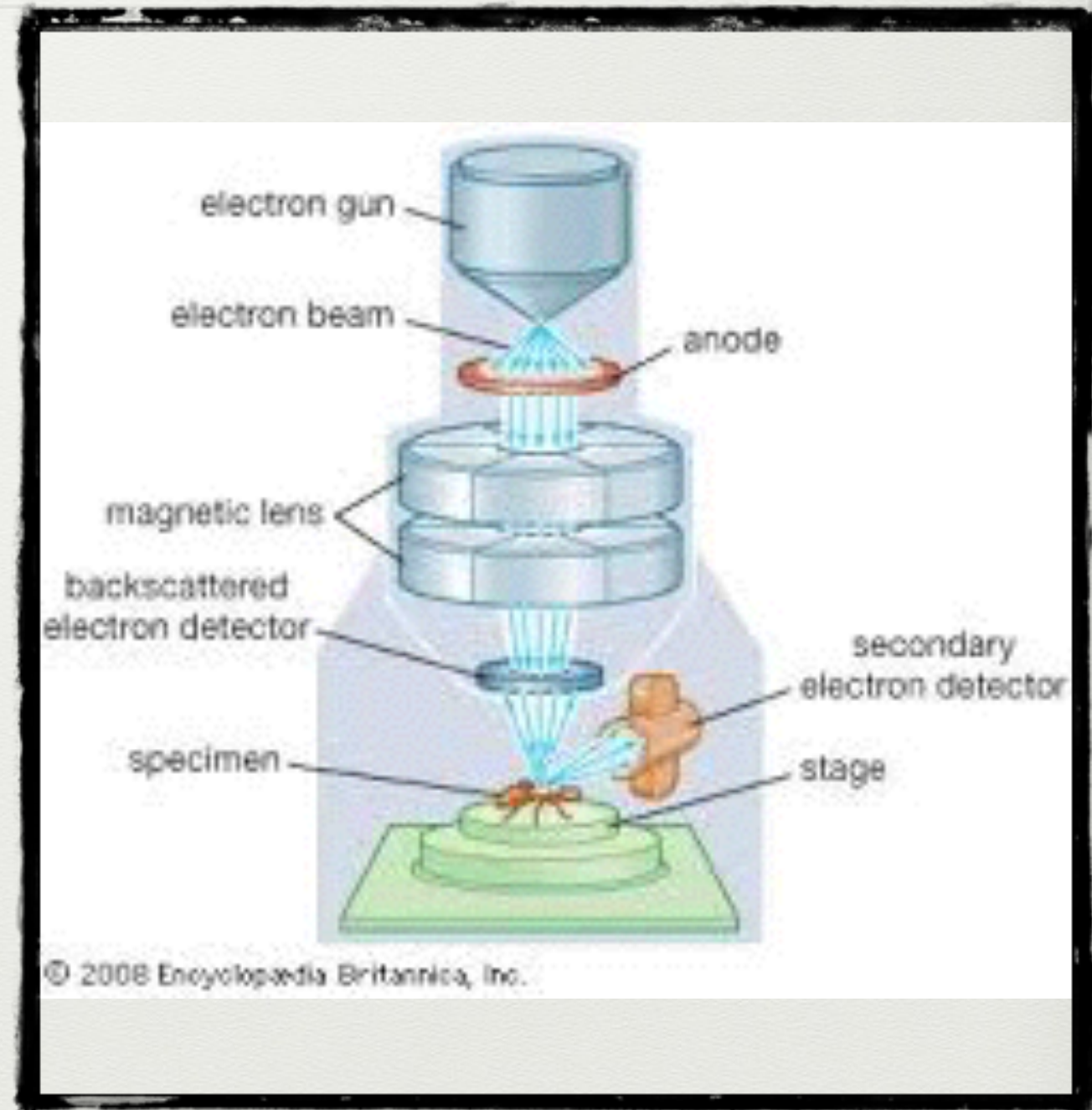
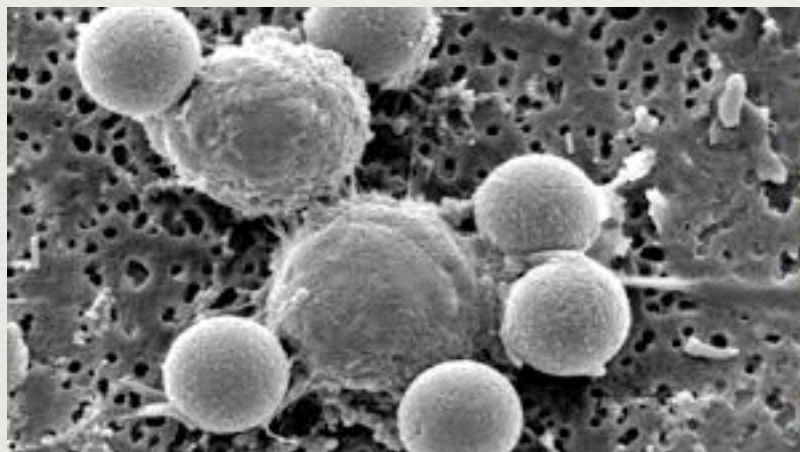
- 50X - 1200X
- USED BY LAB TECHNICIANS TO CHECK BLOOD AND TISSUE SAMPLES





# 7) ELECTRON MICROSCOPE

- 50X - 250,000X!!!!
- USED TO LOOK AT VIRUSES

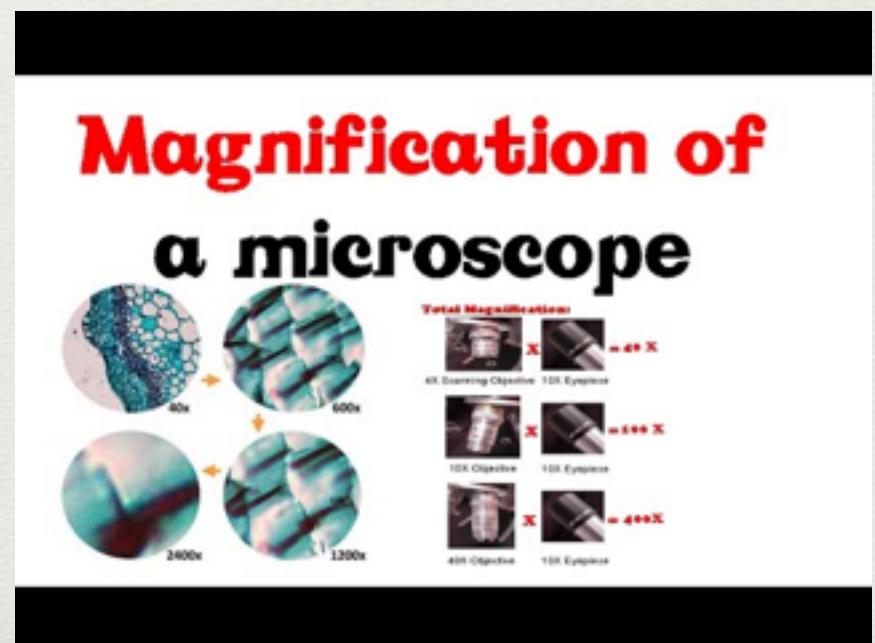




- WHEN CARRYING A MICROSCOPE: ONE HAND ON ARM, ONE HAND UNDER BASE
- TO DETERMINE THE POWER OF A MICROSCOPE: MULTIPLY EYEPIECE BY OBJECTIVE LENS POWER



Figure 1





# BIOLOGICAL DRAWINGS:

- WRITE ALL OF THIS ON YOUR NOTES
- 1) ALWAYS USE PENCIL
- 2) WRITE IN ALL CAPITAL LETTERS
- CENTER THE TITLE
- WRITE MAGNIFICATION UNDER DRAWING
- CENTER YOUR DRAWING





- When you finish your notes, please make sure your name is on it, and turn it in to the yellow bin TODAY!!!.
- After you do this, get a copy of the blank microscope and label and use colored pencils to complete the hand out on the parts of a microscope.
- Please use the picture on my website - under downloadables to complete this sheet.
- This sheet will be turned in to me on Monday
- Don't forget your 5 items to bring to class on Monday:)
- Come to room 18 first on Monday and then we will go to Mr Bradley's after taking roll and checking in with you about your 5 items and stamping your HW for completion.